

RE: INSTALLATION INSTRUCTIONS FOR HUBBELL REPLACEMENT MOTOR

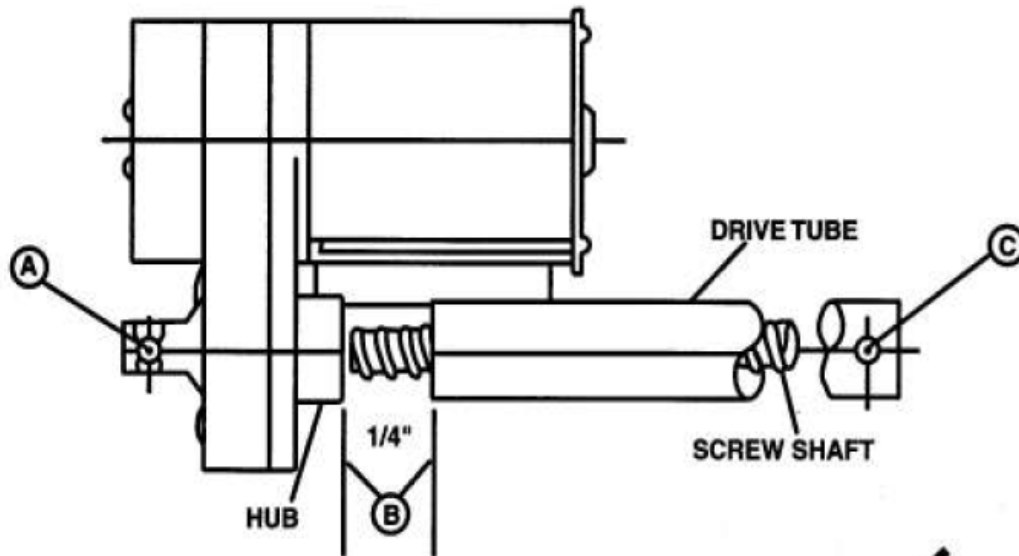
Thank you for your purchase of the replacement for the Hubbell motor for your lift chair. This motor assy. should give you years of trouble-free service, but it must be installed correctly in order to function properly.

The motor is a powerful electrical mechanism with up to 1000 lb torque; injury or damage may occur if not properly handled and installed. Take precaution while doing this installation and follow the required steps.

This motor is equipped with limit switches which allow the motor tube to run in and out only so far before stopping. The motor must be "timed" so these switches will operate correctly. When you received the motor, the timing has already been set correctly; the main thing you need to do is to mount the motor in the chair **without letting the stroke tube** (the round tube that goes in and out) **spin freely during the installation**. Please install the motor in this order:

- 1) Lay the chair on its side (**not** upside down).
- 2) Remove the old motor by removing the clevis pin out of the end of the push tube (C) (see illustration below) where it goes through the chair bracket, and the other clevis pin out of the motor base (A). Unhook the hand control cord from the cord coming out of the motor and remove the motor from the chair. **Be sure to note the position of the motor as it comes out of the chair, so you can install the new motor in that same position.**
- 3) Connect the motor base (A) of the new motor to the base frame of the chair.
- 4) Plug in the hand control to the new motor and plug the new motor into the household current.
- 5) At this point, grab hold of the push tube (C) with one hand and push the up button on the hand control with the other hand; the push tube should start going out from the hub. Take the tube out as far as is needed to align the tube with the connection on the chair. Put the pin back in at the end of the tube (**NOTE: only run the motor up or down to align the components - do not screw the tube in or out more than 1/4 turn to do the alignment.** This will fully connect the motor.)
- 6) Turn the chair back over and run it all the way up to make sure the limit switch turns the motor off when it is in the fully lifted position; then run the chair all the way down to the fully reclined position and see if the limit switch cuts it off there. If the motor tries to keep running when the chair is all the way up or all the way reclined, the timing is off; you can go to the following page on our website and read the Motor Timing & Installation Instructions under the Hubbell section and follow the steps there

to "retime" the motor, or call us for assistance:
www.medicalcentersupply.com/troubleshootingtips.htm



NOTE: These motors are designed to run for a few seconds at a time, and then to be off for several minutes. In testing, some customers try to run the motor up and down, and up and down again, to make sure it is working. *If you do that, the motor may cut off on an internal overload.* If this happens, let it cool off for a few hours and try it again; it should work normally. If you still have questions after you read this and follow the instructions, then let us know and we will be glad to help.